

EQultrasound

equine ultrasound therapy device

EQultrasound is a revolutionary device for the treatment of several equine muscular, articular and tendinous conditions. It stimulates the horse auto-repair processes allowing for a natural resolution of the indicated pathologies. In many cases recovery will be achieved in half of the time compared to the one obtained with traditional medications and drugs. Furthermore horse full rest is not needed, avoiding long muscular rehabilitations.

Care for your horse health, use EQultrasound!
A healthy horse is a happy horse and a winner!

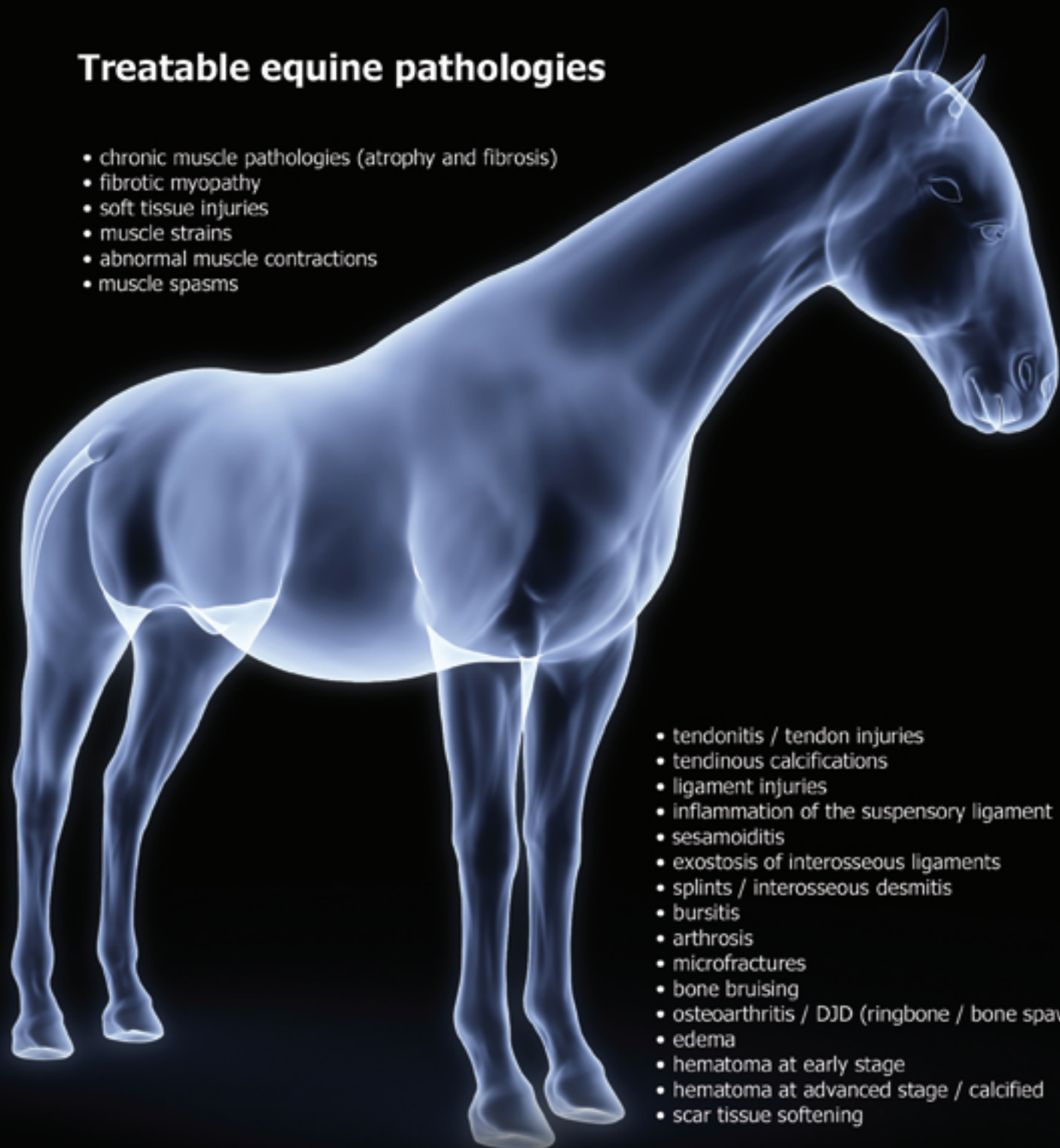


- safe
- effective
- fast
- painless

BAC
www.equultrasound.com

Treatable equine pathologies

- chronic muscle pathologies (atrophy and fibrosis)
- fibrotic myopathy
- soft tissue injuries
- muscle strains
- abnormal muscle contractions
- muscle spasms



- tendonitis / tendon injuries
- tendinous calcifications
- ligament injuries
- inflammation of the suspensory ligament
- sesamoiditis
- exostosis of interosseous ligaments
- splints / interosseous desmitis
- bursitis
- arthrosis
- microfractures
- bone bruising
- osteoarthritis / DJD (ringbone / bone spavin)
- edema
- hematoma at early stage
- hematoma at advanced stage / calcified
- scar tissue softening

Furthermore EQUltrasound treatment increases joint mobility, improves stretchiness of tendons and ligaments, treats muscular pain and inflammation (analgesic effect), treats pain and inflammation caused by bony growths, stimulates the re-absorption of bony growths / calcium deposits, softens scar tissue, stimulates acupuncture points and trigger points for pain relief.

Contraindications

Do NOT treat the following areas: head and eyes, uterus and testicles, heart area.

Treatment should NOT be performed if the horse has any of the following conditions: phlebitis, thrombosis, thrombophlebitis, acute flogistic process, skin injury, areas of bone growth in colts and fillies, ischemic tissues, epilepsy, pregnancy, healing fractures, blood vessels with known clots, inflamed vessels, tumors or cancers, prosthesis.

EQultrasound

equine ultrasound therapy device

EQultrasound low frequency ultrasound therapy produces the following effects within biological tissues:

- **mechanical vibration**
- **diathermy / deep heat**
- **shockwave effect** (with specific hand probe)

Non-thermal effects caused by **mechanical vibration** increase cellular metabolic activity and blood microcirculation, resulting in increased oxygenation and enzymatic activity for a faster recovery of the treated areas.

Diathermy / deep heat causes a deep thermal effect without raising the temperature on skin surface. Deep heat contributes to the increase of cellular metabolic activity and enzymatic activity, since it causes vasodilation and raises the local demand for oxygen and nutrients, consequently accelerating removal of waste substances generated by the injury (histamine, bradykinin and prostaglandins, all of which contribute to sensitization of nerve fibers and pain). Diathermy allows for pain relief and a faster recovery of the treated areas.

The **shockwave effect** produced by EQultrasound is absolutely painless also for calcific pathologies, where shockwaves are usually employed. Shockwaves produce similar effects to the ones obtained with EQultrasound, but with much more pain for the horse, which often must be sedated (which is not necessary for EQultrasound treatments).

The generator transforms electrical energy into acoustic pressure waves and controls low frequency piezoelectric hand probes. The internal microprocessor continuously adjusts the generated oscillatory movements to guarantee **safety** and **performance**.

Compared to traditional high frequency ultrasound therapy (1/3 MHz), EQultrasound produces a more effective and deeper action for a **faster recovery in the treatment of equine muscles, tendons and joint structures**.

Through the use of five different hand probes, EQultrasound is able to modulate a wide range of frequencies, so that with the same device several different muscular, articular and tendinous pathologies can be treated.



Flat silver hand probe (pulsed emission)

- traumas of the musculoskeletal system
- inflammations of the musculoskeletal system
- drainage of edema and hematoma at early stage



Concave silver hand probe (pulsed emission)

- traumas and inflammations of the musculoskeletal system
- features a more focalized ultrasonic wave
- concave shape allows better coupling on curved areas



Flat red hand probe (continuous emission)

- acute muscle pathologies (sprains, contractions, cramps)
- chronic muscle pathologies (atrophy and fibrosis)
- drainage of hematoma at advanced stage / calcified hematoma



Concave red hand probe (continuous emission)

- specifically designed for the treatment of arthrosis
- features a more focalized and powerful ultrasonic wave
- concave shape allows better coupling on curved areas



Shockwave effect hand probe (pulsed emission)

- acute muscle and tendon pathologies
- chronic muscle and tendon pathologies
- tendinous calcifications
- joint injuries and traumas
- scar tissue softening
- severe muscle fibrosis / fibrotic myopathy
- stimulation of trigger points for pain relief



EQultrasound is ideal for the treatment of show jumping horses, dressage horses, cross-country horses, carriage driving horses, racing horses, polo horses, rodeo horses, fox hunting horses.



Technical features

Device type: 38 kHz +/-2 ultrasound device
Conformity and standards: 93/42/CEE, 2007/47/CE
Power supply: 24 VDC - 2.9 A
Supply voltage: 100/240 V - 50/60 Hz
Absorbed power: 57 W max.
Display: LCD touch screen
Size: L 12" x D 8" x H 3"
Weight: 5.7 pounds
Hand probe diameter: Ø 1.97 inches
Hand probe area: 3.08 square inches
Hand probe weight: 1.55 pounds

BAC

1368 North US 1 - Suite 402
Ormond Beach, FL 32174 (USA)
Phone 386-868-0618
Fax 386-236-1215

www.equtrasound.com