

AQA Wood

The dream of wellness becomes reality

Lemi[®]
MADE IN ITALY

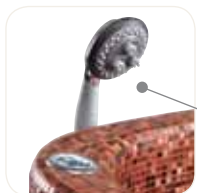


PATENTED

100%
made in Italy

Smart Shape

The large lateral grooves channel the water to the drain, thereby facilitating cleaning operations.



Bolero

A handpiece with water vibromassage which is perfect for every wet treatment, including scrubs, body wraps and mud wraps. The unit provides for the complete cleansing and rinsing of the body at the end of the treatment, with no need for an in-cabin shower. The bolero offers the possibility of performing the entire treatment upon the Aqa Wood unit: from "A" to "Z".



Steam bath

The powerful steam generator allows the customer to enjoy an effective steam bath. Just mount the simple, hygienic, washable curtain, which is designed to optimize work operations, as well as to save time and in-cabin costs. The tub is entirely covered with an elegant Bisazza mosaic, which is available in four colors to better adapt to the style of any environment



Waterproof mattress

A beige waterproof mattress, designed to make the treatment even more comfortable

Adjustable wet table

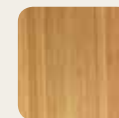
By means of an electric motor with a practical control mechanism, which guarantees the maximum comfort of the customer as well as the operator.

Wooden structure

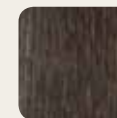
An extremely solid and robust, electrically-adjustable wooden support structure



bleached wood



natural wood



wengé wood

cod. 139

DISCOVER WATER, BREATHE ITS PURITY, EXPERIENCE ITS BENEFITS: THE AQA WOOD IS THE NEW WET TABLE DESIGNED TO NATURALLY CARESS THE BODY AND SPIRIT, WHILE RESTORING BALANCE THROUGH CONTACT WITH THIS PRIMORDIAL ELEMENT. A HIGHLY-FUNCTIONAL CORE ENCLOSED WITHIN A MOSAIC OF REFINED BEAUTY: A JOY TO BEHOLD, A GEM CAPABLE OF GRACING THE SPA ENVIRONMENT WITH THE COLORS OF UNPARALLELED ELEGANCE.

Ideal for: Steam baths, body wraps and masks, scrubs, traditional body treatments, water treatments, peeling treatments, aromatherapy, thalassotherapy, mud therapy, massages and thermal treatments.



LKP *Lemi* Key Performance



Multifunctional x 4

Adjustable wet table, steam bath, vibromassage and top converter.



Easy to Clean

Integrated, automatic boiler cleaning system which guarantees a long working life. An automatic descaling system is activated periodically based on the frequency of use.



All in 1

The customer can even remain lying comfortably during the rinsing phase



Customization

The wooden base is available in the following colors: natural, bleached or wengé wood; the mosaic is available in 3 color variants.



EasyAccess

The height adjustment provides for easy customer access, as well as ergonomic working positions for the operator.



Italian Design

Distinctive Italian design.



Rounded safety corners

All of the corners of the Aqa Wood unit are rounded in order to facilitate the operator's and customer's movements throughout the cabin.



Smart Shape

The tub is designed to optimize "shapes and spaces". It has the smallest possible external encumbrance and allows the operator to remain close to the customer while working in a comfortable position. The ample internal space is designed to accommodate customers of all sizes.

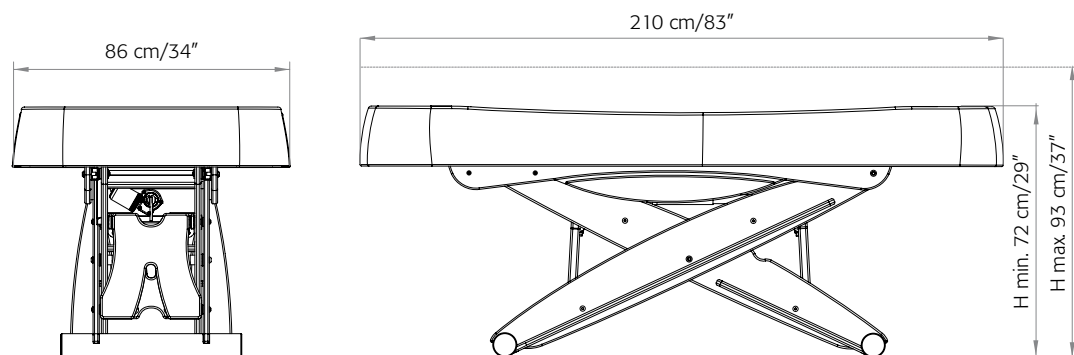
Technical specifications

AQA Wood cod. 139



N° 443.090.V

Table of dimensions



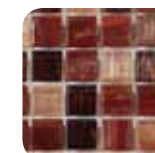
Mosaics is available in the following colours



Firenze



Venezia



Roma

Options upon request: Top converter mattress



Top Converter for massages available upon request.

Packaging details

Packaging size:

Wooden crate: cm 225 x 110 x 90 h (89"x44"x35")

Volume: 2.23 m³

Gross weight: 270 kg (596 lbs)

Net weight: 130 kg (287 lbs)

Electric requirements

Voltage: 230V ac, 110V

Frequency: 50 Hz

Absorption: 6 Amp max

Hydraulic connections required

Installation schemes available upon request



Brusaferri & C S.r.l.

Headquarters / Sede operativa:

via M. Maretti Soldi, 13 (ex S.P. n. 6)

26011 Casalbuttano (CR) • Italy

Tel. +39 0374 363068/69

Fax +39 0374 363071

www.lemi.it • info@lemi.it



AQA Wood is CE conformed and is manufactured in accordance with European Directives: 2006/42/CE; 2004/108/CE; 2006/95/CE. CEI EN 60204-1:2006-09; UNI EN 12100-1-2:2009; UNI EN 349 (2008)