



MöllerMedical

The Art Of Liposuction

• *Vibrasat*® • *Liposat*® • *Vacusat*®



Möller Medical proudly presents:

Liposat® Pro plus

A new product based on 20 years of experience.



Table of contents

Vibrasat®

Product information	04
Cannula assortment	08
Accessories	12

Liposat®

Product information	14
Accessories	18

Vacusat®

Product information	20
Accessories	24

Modular configuration

Information	26
-------------	----

Vibrasat[®] Vibration Assisted Liposuction

Introducing *Vibrasat*[®] Pro

Möller Medical's latest in Power Assisted Liposuction technology.

▶ **6000** strokes/min
by approx. 3mm





Usability

- Ergonomic design with reduced weight
- Solid metal finish
- Simple operation with a single on/off button
- Quiet and smooth operation
- Machine cleanable and fully autoclavable

Technology

- Cannula movement reciprocating and linear
- 3000 - 5000 strokes/minute
- Boost function 6000 strokes/minute
- Axial movement length approx. 3 mm
- Handpiece, control unit and up to two foot switches for speed control

Vibrasat® Pro

Power Assisted Liposuction
technology in perfection.

QuickLock® System

Allows the surgeon to change cannulas without changing the tube set

Control Button (Vibration / Boost - on/off)

3000 - 5000 strokes/min at approx. 3mm

Boost mode with up to 6000 strokes/min

Anatomically shaped for a balanced handling

Reduced heat by a new efficient thermal design

Fully machine washable and autoclavable

Ergonomically cushioned to support the surgeon's arm to prevent numbing





Vibrasat® Pro

Vibrating handle

We've collected and evaluated our customers feedback over the years and the result can be seen in our new ergonomic and powerful handle for Power Assisted Liposuction. The new *Vibrasat® Pro* even improves the performance of the original *Vibrasat® power*. The new motor is more powerful and at the same time it is more pleasant for you as a surgeon.

The new *Vibrasat® Pro QuickLock®* connection allows you to change cannulas easy and fast during your treatment. The button on the handle provides quick access to the boost function.

Technical data

Dimensions (W x H x D)	170 x 90 x 205 mm
Handpiece (dia. x L)	52 x 300 mm
Weight control unit/ handpiece	1.2 kg/ 0.7 kg
Medical device class	Ila
Stroke lenght	approx. 3 mm
Stroke frequency	3,000 - 6,000 /min
Power supply	100 - 240 VAC, 50 - 60 Hz

REF 00003920 (consists of Wand REF 00003922, Console REF 00003921)



Vibrasat® power

The Original *Vibrasat®*

The *Vibrasat® power* makes the surgeon's daily work effective with its ergonomic design and performance. By using the *Vibrasat® power*, you offer your patients a gentle and consistent liposuction treatment.

The device moves the connected cannula with fast and short longitudinal movements. Combined with the suction vacuum, these movements lead to gentle microscopic removal of adipose tissue. The cannulas glide through the body with low effort from the vibration which reduces strain on surgeons and provides flexibility for surgeons to maneuver the cannula.

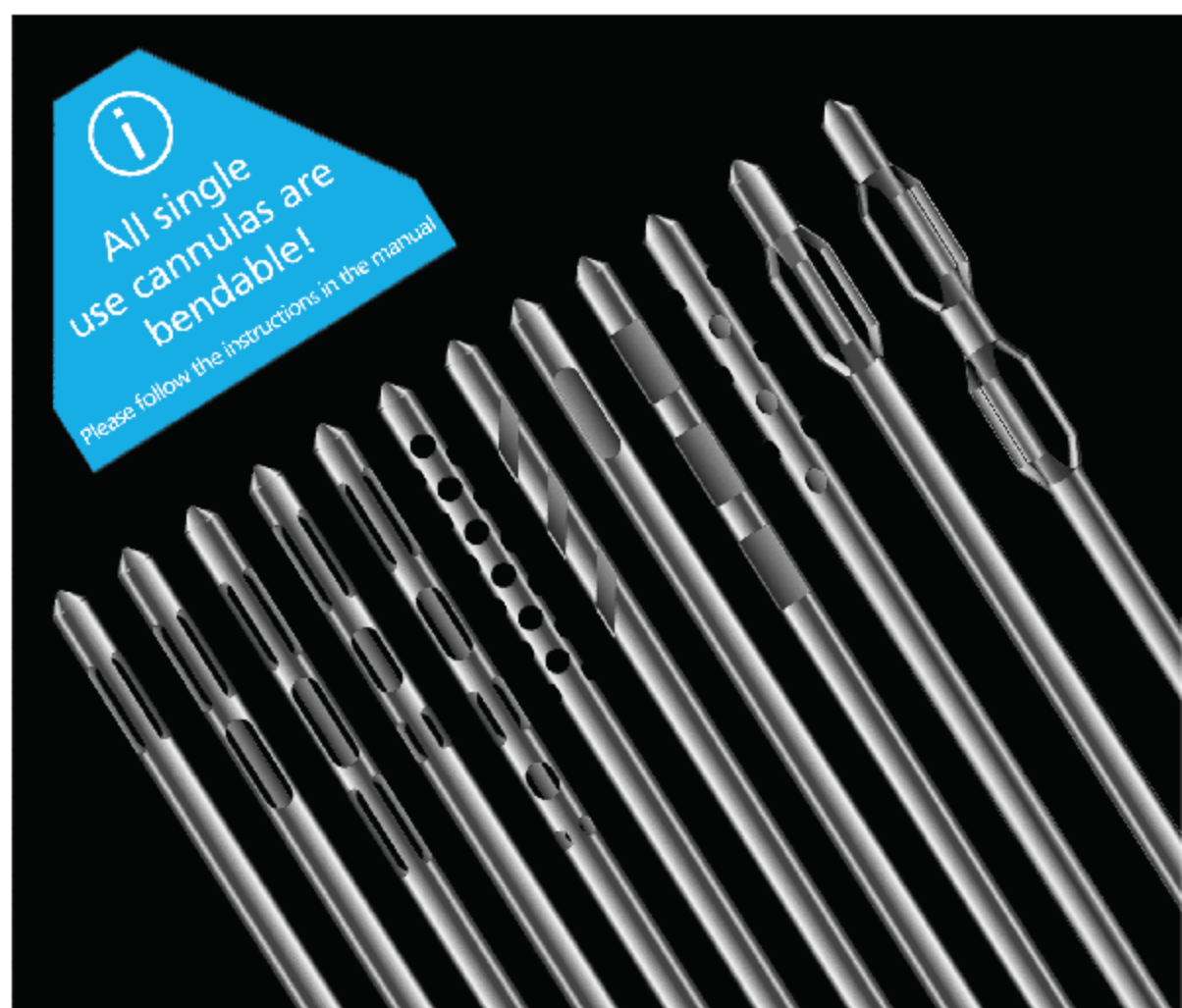
Technical data

Dimensions (W x H x D)	150 x 100 x 200 mm
Handpiece (dia. x L)	55 x 180 mm
Weight control unit/ handpiece	2.8 kg/ 0.75 kg
Medical device class	Ila
Stroke lenght	approx. 3 mm
Stroke frequency	3,000 - 5,000 /min
Power supply	100 - 240 VAC, 50 - 60 Hz

REF 00002246

Vibrasat®

Aesthetic Surgery Cannulas



i
All single
use cannulas are
bendable!
Please follow the instructions in the manual

Our Portfolio

Available in different sizes and
diameters.

► **100 +** variations
Designed, developed and
made in Germany

Mercedes

360° | Medium volume | 3 ports

The all-time classic among liposuction cannulas. Developed in cooperation with Dr. Afschin Fatemi it is particularly suitable for treatments which require a gentle 360° multilayer harvesting.



Double Mercedes

360° | Large volume | 6 ports

Two sets of Mercedes holes in this cannula allow 360° fat aspiration and the aspiration of a larger volume in the same time.



Triple Mercedes

360° | High volume | 9 ports

Equipped with three sets of Mercedes holes this cannula is designed for large volume extraction. This arrangement allows multi-layered adipose tissue to be extracted quickly, evenly and effectively.



Rapid Extraction

360° | High volume | 9 ports

The Rapid Extraction Cannula, developed with Dr. Afschin Fatemi, offers optimal aspiration distribution across all ports of the cannula. For fast and gentle extraction of large volumes.



Multi Rapid Extraction

360° | Super high volume | 15 ports

This cannula is the right choice for debulking fat-rich tissue areas that need to be treated evenly and efficiently.



Multi-Hole

360° | Small volume | 24 ports

This cannula is ideal for harvesting fat cells for fat transplantation. It allows to remove adipose tissue in form of small and uniform lobules. Also ideal for fine sculpting and feathering.



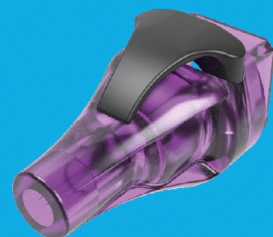
Vibrasat® power Thread

Single use



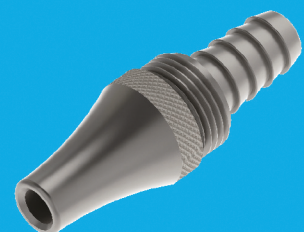
Vibrasat® Pro QuickLock®

Single use



Vibrasat® power Thread

Reusable



Vibrasat® Pro QuickLock®

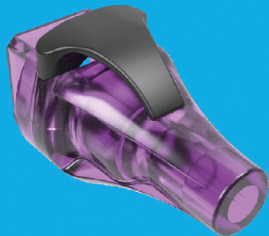
Reusable



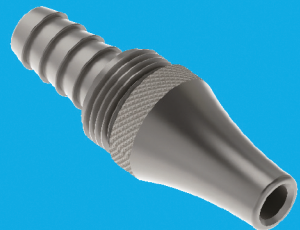
Vibrasat® power Thread
Single use



Vibrasat® Pro QuickLock
Single use



Vibrasat® power Thread
Reusable



Vibrasat® Pro QuickLock
Reusable



Candy Cane

180° | Large volume | 3 ports

Due to its very special geometry, the Candy Cane Cannula is designed for large volume fat extraction in highly fibrous tissue.



Single-Port

90° | Medium volume | Single port

The Single-Port Cannula is particularly suitable for sensitive areas. The one-sided placement of the hole offers selective and direct extraction of adipose tissue.



Tri-Port

90° | High volume | 3 ports

This cannula features 3 holes in a row to offer the precision of the Single-Port Cannula in combination with a high suction volume.



Perspiratory Gland

270° | Manual extraction | Medium volume | 9 ports

Due to the abrasive hole geometry this bended cannula, developed with Dr. Afschin Fatemi, is an effective way of removing sweat glands.



Basket

360° | Super high volume | 3 ports

Designed for large volume infiltration, pretunnelling, harvesting and equalisation of tissue. Available in 2 configurations: 1.5 cannulas are flared to 1.5 of their tube diameter. 2.0 cannulas are flared to the double of their tube diameter at the basket.



Double Basket

360° | Super high volume | 6 ports

Double Basket Cannulas have an even greater throughput than the Basket Cannulas. Also available in the same 2 configurations as the Basket Cannula.



Extraction

Extraction and Infiltration

Removal Cannula

270° | Manual extraction | Luer-Lock | 2 ports
 Ø 2.5 mm (13 G) | Length 110 mm | Single use | Sterile

Designed for manual fat removal the open tip of this cannula allows the extraction of small amounts of fatty tissue. Can be used with syringes with Luer-Lock connector. Suitable for Stem-Cell collection.* REF 10001180



Scar Cannula - V-shaped blade

90° | Manual infiltration | Luer-Lock | Single port
 Ø 1.5 mm (17 G) | Length 66 mm | Single use | Sterile

The Scar Cannula with its V-shaped blade is especially suited for the gentle cutting of connecting tissue and the injection of fat in one operation.**

REF 10001181



Injection Cannula 1 - Straight

180° | Manual infiltration | Luer-Lock | Single port
 Ø 1.6 mm (16 G) | Length 66.5 mm | Single use | Sterile

This cannula is perfect for the precise infiltration of small amounts of fat. The specially developed tip, with a 180° opening, reduces the risk of injury to vessels and nerves in sensitive body regions.*

REF 10001182



Injection Cannula 2 - Concave

180° | Manual infiltration | Luer-Lock | Single port
 Ø 1.6 mm (16 G) | Length 73 mm | Single use | Sterile

The Injection Cannula with its concave curved shape is ideal for injecting fat into difficult to access regions. Its tip reduces the risk of injury to vessels and nerves in sensitive body regions.*

REF 10001183



Injection Cannula 3 - Convex

180° | Manual infiltration | Luer-Lock | Single port
 Ø 1.6 mm (16 G) | Length 73 mm | Single use | Sterile

This cannula is designed for optimal injecting fat into regions that are difficult to access. The tip reduces the risk of injury to vessels and nerves in sensitive body regions.*

REF 10001184

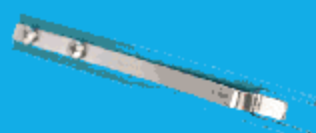


Accessories



Hand piece
For manual liposuction

REF 00002254



Plunger holder
For 10ml syringe

REF 00002452



Plunger holder
For 20ml syringe

REF 00002453



Injection
For 10 or 20ml LL | sterile

10ml REF 00002418 20ml REF 00002418

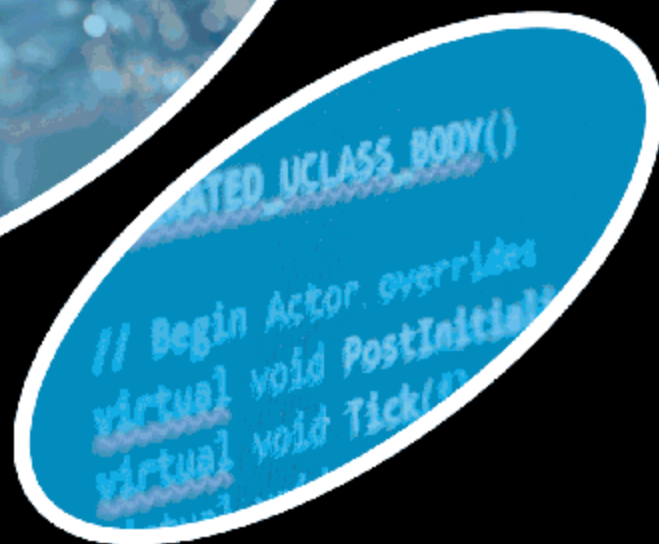
Dr. Alexander T. Hamers



„Working with Möller Medicals Liposuction devices makes my daily work routine more comfortable, increases patients safety and shortens their regeneration process after the treatment.“

Made In Germany

Developed, designed and manufactured with highest quality standards.



Liposat[®]
Infiltration pumps

The new
Liposat[®] *Pro plus*

Möller Medical's latest infiltration device.

▶ **1000** ml/min
Infiltration speed



Usability

User-friendly and intuitive operation

Display of the infiltrated volume

Automated tube insertion

Super silent operation

Priming-function to fill the tube set faster before the treatment

Technology

Especially gentle pump rotor to protect the valuable fat cells

Infiltration speed adjustable from 50 to 1000 ml/min

Automated volume management, pump stops when the target volume is reached

Attachment of two footswitches at the same time possible

New: *Liposat® Pro plus*

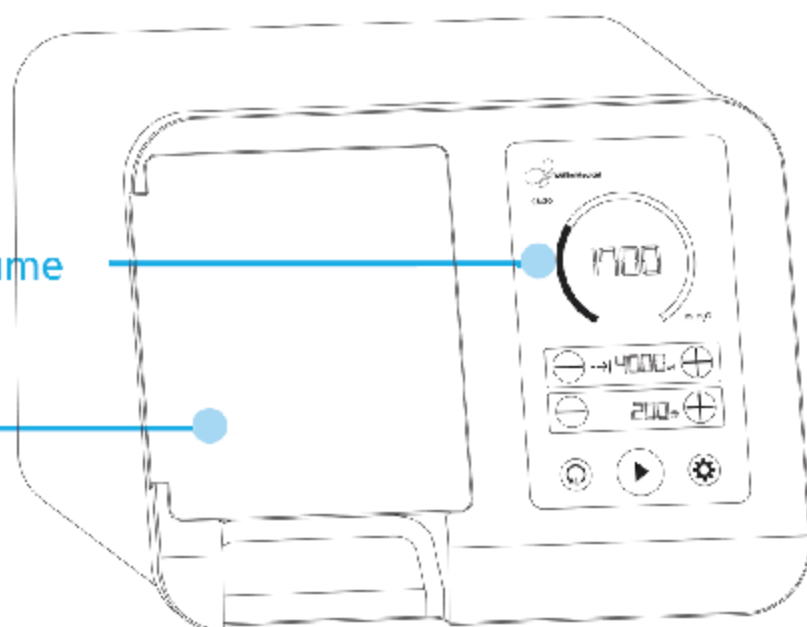
Premium device for easy and save infiltration.

Display of the infiltrated volume

Intuitive operation via touch display

Gentle pump rotor

Protects the valuable fat cells



Liposat® Pro plus

High performance infiltration pump

Liposat® Pro plus is the perfect pump for fat transfer and Tumescent Local Anesthesia (TLA). With its powerful motor and gear, the outstanding rotor and its newly designed tube sets it is suitable for the needs of aesthetic surgeons.

Another advantage is the high survivability of fat cells. It is one of very few pumps, which is regulatory cleared for fat transfer by CE and US FDA. The infiltration speed can be varied within a range of 50 to 1000 ml/min. Due to its removable rotor and carefully designed surfaces, cleaning will be easy and quick.

Liposat® Pro plus has been engineered and is produced in Germany.

Technical data

Dimensions	275 x 210 x 350 mm
Weight	6 kg
Pumping rate	50 - 1000 ml/min
Medical device class	Ila
Accuracy of pumping rate	±15 %
Power supply	100 - 240 VAC, 50 - 60 Hz

REF 00003974



Liposat® Pro

Standard infiltration pump

Our new generation TLA infiltration pump simplifies work processes. *Liposat® Pro* is the perfect system for easy and efficient Tumescence Local Anesthesia (TLA).

The automated tube set loader cuts down preparation time. The infiltration speed can be varied within a range of 50 to 300 ml/min. The product look and feel meets highest standards. *Liposat® Pro* will perfectly integrate into your premises as a valuable asset.

Technical data

Dimensions	275 x 210 x 350 mm
Weight	5.8 kg
Pumping rate	50 - 300 ml/min
Medical device class	Ila
Accuracy of pumping rate	±15 %
Power supply	100 - 240 VAC, 50 - 60 Hz

REF 00003977



Liposat® power

Infiltration pump

Liposuction using the Tumescence Local Anesthesia (TLA) technique is the most frequently performed procedure around the world.

Liposat® power has been specially developed for this application. Its features and functions have been designed for surgical and aesthetic medicine. This has principal advantages for any treatment that requires local anaesthesia, such as liposuction or vascular surgery.

Technical data

Dimensions	270 x 220 x 180 mm
Weight	10 kg
Pumping rate	40 - 300 ml/min
Medical device class	Ila
Accuracy of pumping rate	±15 %
Power supply	100 - 240 VAC, 50 - 60 Hz

REF 00002274

Accessories



Tube set
For Liposat® basic
REF 00002492



Infiltration tube set
For Liposat® power
REF 00002251



TLA Tubing
For Liposat® Pro plus
REF 00003997



FAT Tubing
For Liposat® Pro plus
REF 00003948



Sterican cannula
Sterile
REF 00002535



3-Pedal Footswitch
For Liposat® Pro/ Pro plus | 2m wire
Sparepart-REF 93003517



1-Pedal Footswitch
For Liposat® power/ Pro/ Pro plus | 2m wire
Sparepart- REF 93003545

3-Pedal Footswitch

For Liposat® Pro/ Pro plus | 5m wire

REF 00003981

1-Pedal Footswitch

For Liposat® power/ Pro/ Pro plus | 5m wire

REF 00003982

TLA Luer-Lock Adapter

REF 00004027

3-way tap

With 3 infusion tubes | 80cm | sterile

REF 00002278

5-way tap

With 5 infusion tubes | 80cm | sterile

REF 00002279

Heating dishes

For Liposat® power

REF 00002542

Vertical mounting kit

For Liposat® Pro/ Pro plus

REF 00004034

Horizontal mounting kit

For Liposat® Pro/ Pro plus

REF 00004035



Vacusat[®] Surgical aspirator

Vacusat[®] power

The super silent high-performance surgical aspirator.

▶ **53** dB(A)
Acoustic volume



Usability

Easy operation

Serves as a rack for the complete product portfolio

Movable device on wheels

Controllable via footswitch

One of the quietest suction devices on the market

Technology

Provides a vacuum of approx. -90kPa

Continuous vacuum control

Suction power 58 l/min (50 Hz)

Acoustic volume of 53 dB(A)

Vacusat® power

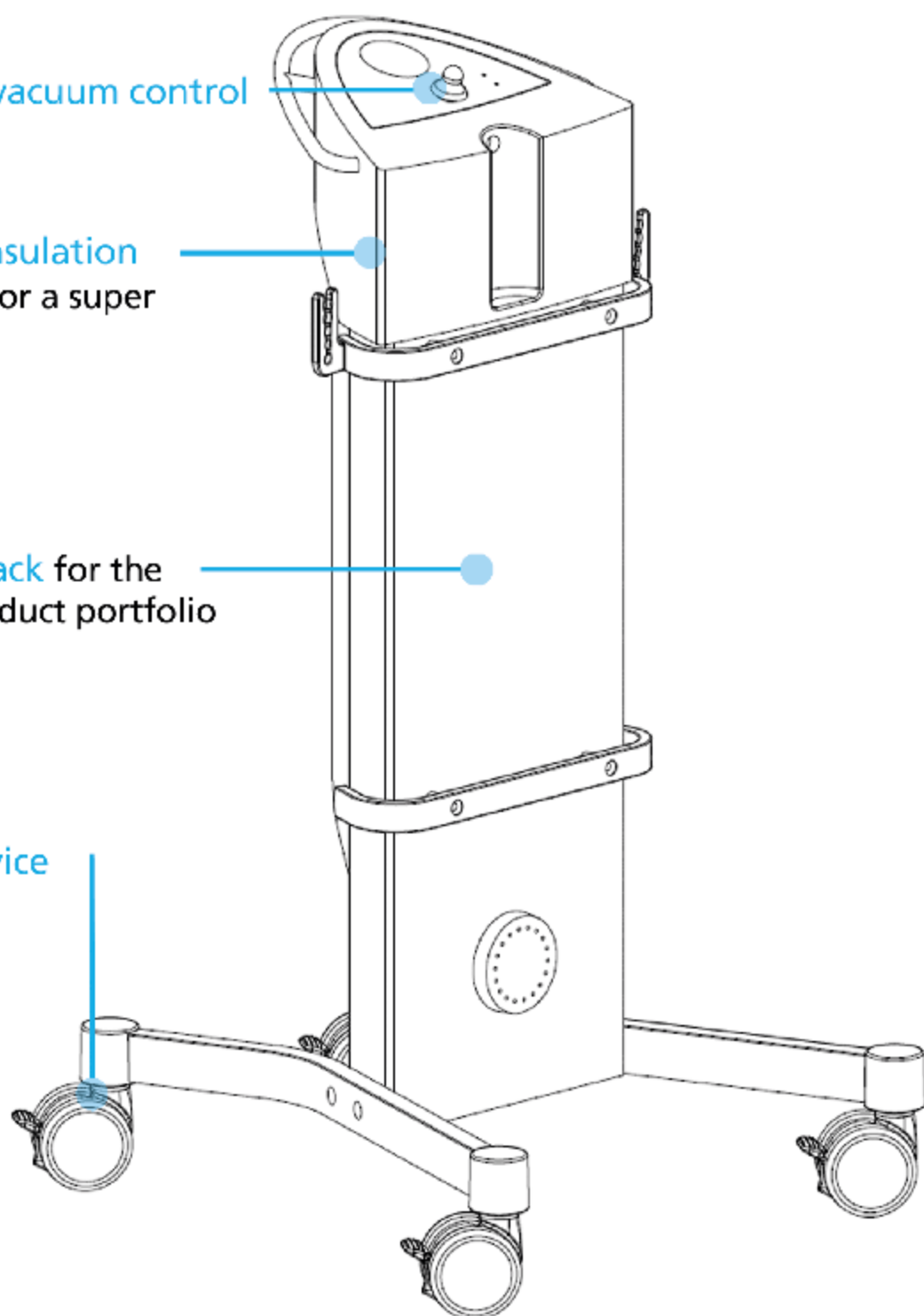
One of the quietest suction devices.

Continuous vacuum control

Innovative insulation
technology for a super
silent suction

Serves as a rack for the
complete product portfolio

Movable device



Vacusat® power

Powerful surgical suction

The Vacusat® power surgical suction device is an extremely powerful and untiring piece of equipment which is both quick and simple to operate. Thanks to its innovative insulation technology, it is one of the most quiet suction devices of its class.

Following accessories are already included:

- 1 footswitch, 1 pedal
- 1 vacuum connecting tube
- 1 serial tube
- 1 vacuum serial tube with T-piece
- 2 holders for containers
- 2 containers for inner containers
- 2 disposable inner containers, non-sterile 3 liters



Technical data

Dimensions	1000 x 500 x 560 mm
Weight	26 kg
Suction power	58 l/min ± 6 l/min at 50 Hz
Medical device class	I
Vacuum	-90 kPa on NN (normal null; 100 kPa = 1 Bar = 1,000 mbar)
Power supply	220 VAC, 50 - 60 Hz
Current consumption	1.1 A
Fuses	T 1.6 AH

REF 00002252

Dr. Massimo Gianfermi

"The cost per patient is a decisive factor in the choice of equipment for a hospital practice.

The use of the Vibrasat® for lipofilling allowed a 70% price reduction of consumable material used in comparison of our previous technic.

The Möller Medical Vibrasat® is a versatile and complete system allowing quick, reliable, painless and cost effective surgery for large body contouring surgery and lipofilling in breast reconstruction."



Accessories



Suction tube

3m long | red | sterile

REF 00002264



Suction tube

3m long | blue | sterile

REF 00002430



Vacuum connection tube

REF 00002255



Vacuum serial tube

Silicone

REF 00002259



Serial tube

With ankle blue 287mm

REF 00002260



Filter blade

REF 00002296



Disposable container

3ltr. | green

REF 00002256

Rail clamp

For equipment rail

REF 00002258

Hydrophobic filter

For overflow protection

REF 00002297

Overflow protection

For hydrophobic filter

REF 00002299

Container

For disposable bags | 3ltr.

REF 00002257

Foot switch

For suction unit *Vacusat®*

REF 00002656



Dr. Afschin Fatemi



„The button on the new *Vibrasat® Pro* is great and the new boost function is very beneficial for certain surgical cases.“

Modular system for Power Assisted Liposuction

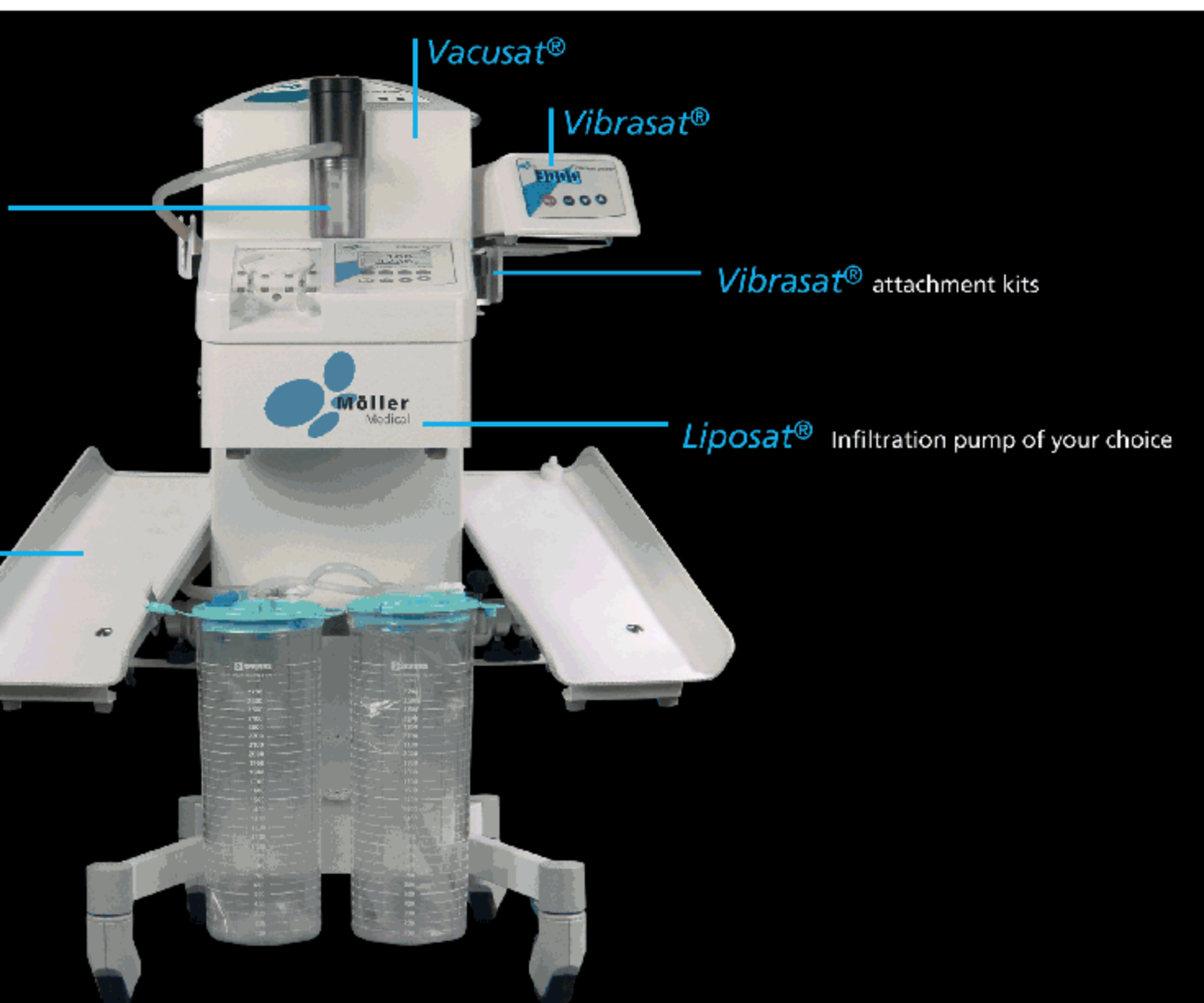
Overflow protection
and Hydrophobic filter

Heating dishes

Our *Configuration*

Configure your perfect liposuction unit.

► **Modular** system for
your individual needs



Configuration

The combination consisting of the medical products **Vacusat® power** with one of our infiltration pumps **Liposat®** and the vibration devices of our **Vibrasat®** line offers an ideal complete solution for liposuction.

All components are perfectly compatible and harmonised to each other, guaranteeing excellent efficiency, environmentally friendly operation and a maximum in safety for your patient.

REF 00002253

Possible combinations

1 **Vacusat® power** with accessories

1 **Liposat® Pro plus, Liposat® Pro or Liposat® power** with accessories

1 **Vibrasat® Pro or Vibrasat® power** with accessories

2 heating dishes in combination with **Liposat® power**

2 attachment kits for **Vibrasat®** and **Liposat®**



Made in Germany



MEDICI-H International Medical Products spol. s r.o.
Herálecká I. 1577/6 140 00 Praha 4
Gerstnerova 5, 170 00 Praha 7
Tel : +420 233 370 630 Fax : +420 233 373 556
Email: medici-h@medici-h.cz Web: www.medici-h.cz

Möller Medical GmbH
Wasserkuppenstrasse 29-31
36043 Fulda, Germany
sales@moeller-medical.com

Moeller Medical Devices USA Inc.
400 South Pearl Street
Albany, NY 12202
sales@us.moeller-medical.com

moeller-medical.com

REF - 70001981/2020-01C