

Introducing the NEW

v900L

- Polarized LED
- Mobile – Battery Operated
- Lightweight – Comfortable Design
- Flexible – Adjustable
- Hands-Free – Cool Operation
- Unprecedented Optical Performance
- Breakthrough Lux Uniformity



mobile-battery operated

Still Offering The

v300

- Polarized Halogen
- AC Powered - Tethered
- Large Diffuse Viewing Area



tethered

v300 & v900L APPLICATIONS

- Vascular Laser Treatments
- Sclerotherapy
- Thermo-coagulation Devices
- Hair-removal / Grafting / Transplantation
- General Skin Exams and Procedures
- Botox or Filler Treatments

Light So Unique, It Must Be Experienced

Syris Scientific • www.syrisscientific.com • 207-657-7050 • 800-714-1374

Comparison Chart

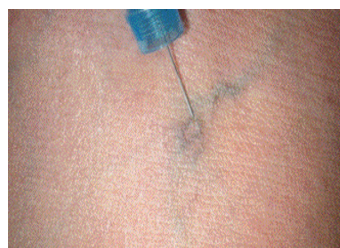
	v900L	v300
Light Engine	LED	Halogen
Source of power	Lithium ion battery	AC
Battery	4 hr initial run time	No battery option
Illumination Area	4 inches	6-8 inches
Optics	Collimated beam angle	Diffuse
Magnification	#3 Diopter shield standard #4 & #5 Diopter shield options	#3 Diopter lens standard #4 & #5 Diopter lens options
Working Distance	14 inches with #3 diopter 10 inches with #4, 8 inches with #5 diopter	14 inches with #3 diopter 10 inches with #4, 8 inches with #5 diopter
Headgear	Easily adjustable knobs top and back	Adjustable knob in back
Carrying Case	Included	Included
Laser Use	Recommended for laser use	Can be used with lasers

Benefits and Features Seen by Vision Enhancement System Customers

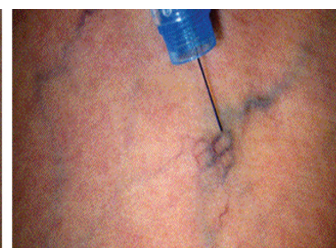
- Hands-Free Device
- Enhanced vision of dermal inspection procedures
- Visualization 1mm below the skin's surface
- Reduced reflective glare from the skin
- Increased accuracy and reduced procedure times
- Reduced exam times
- Reduced recovery times for patients
- Changeable magnification

Syris v300 and v900L Technical Specifications

By separating the components of reflectance, the Syris products allow enhanced viewing into the skin, and of the skin surface. By using a polarized illuminating light combined with polarized viewing, the Syris products easily separates the two components of skin reflectance. With source and viewing polarizers crossed, the specular component is blocked, producing a greatly enhanced view below the skin surface. When the source and viewing polarizers are parallel, surface features such as textures, scale and wrinkles are enhanced.



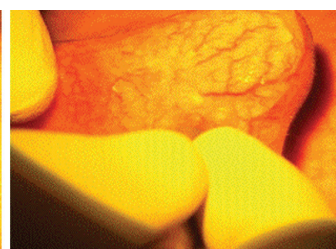
WITHOUT



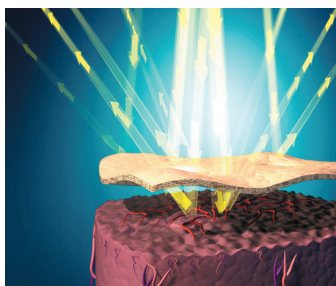
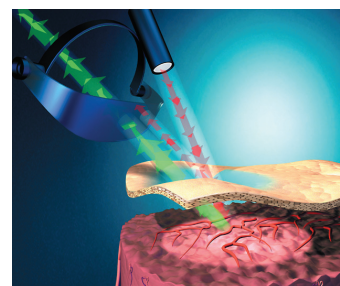
WITH ENHANCEMENT



WITHOUT



WITH ENHANCEMENT



Light So Unique, It Must Be Experienced

Syris Scientific • www.syrisscientific.com • 207-657-7050 • 800-714-1374